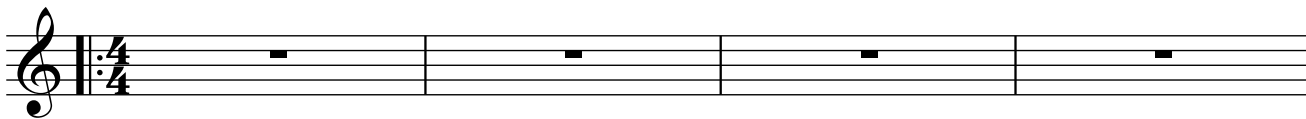


# mohalk (solos)

**A**

Db

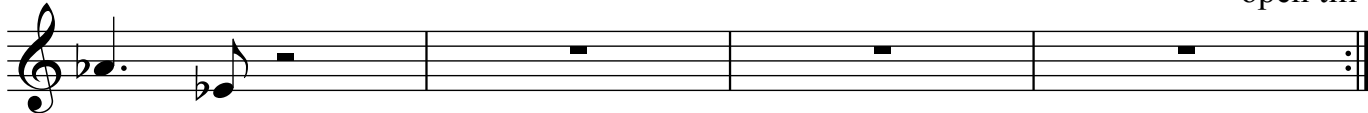


5 F-



9 Ab Eb

open till Q



13 F<sup>7</sup>



17 B<sup>Δ7</sup>

Ab<sup>-7</sup>

OPEN TILL Q



21

**B**

Db<sup>Δ7</sup>

Eb/F

B<sup>Δ7</sup>

Db/Eb

B<sup>Δ7</sup>

Bb/C

open till Q

